

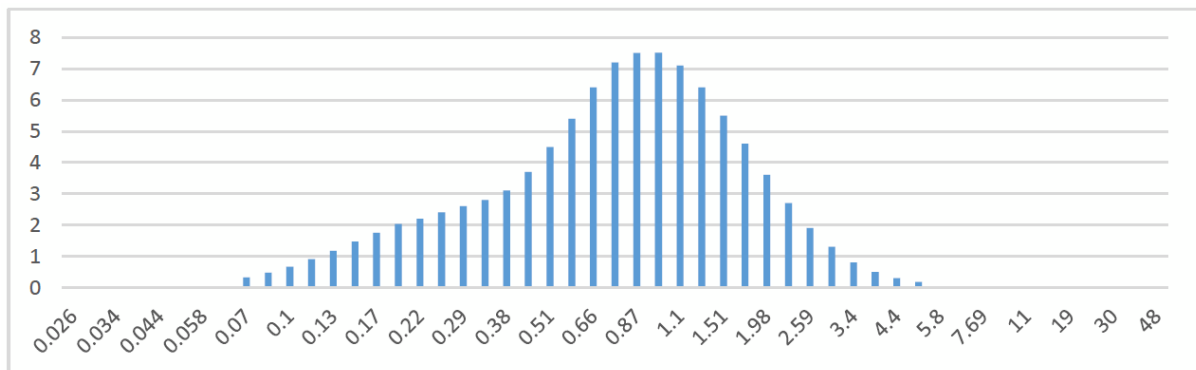


Address: 3158 S. Chrysler Ave., Tucson, AZ 85713, USA  
 Tel: 1-520-514-1100 Fax: 1-520-747-4024  
<http://www.advaluetech.com> Email: sales@advaluetech.com

**Physical and Chemical Properties for Alumina Powder**  
**(Item# ALO-5N-2)**

ITEM	UNIT	VALUE
Loose Density	g/cc	0.4-0.45
Tapped Density <sup>1</sup>	g/cc	0.6-0.65
Surface Area	m <sup>2</sup> /g	4~8
Particle Size Distribution		
D90	μm	1.8
D50	μm	0.7
D10	μm	0.2
Na	ppmw	3
Mg	ppmw	0.5
Si	ppmw	3
Ca	ppmw	3
Ti	ppmw	0.2
Fe	ppmw	2
K	ppmw	<0.5

**Particle Size Distribution:**



<sup>1</sup> Loose and tapped density can be changed according to the customer's requirements